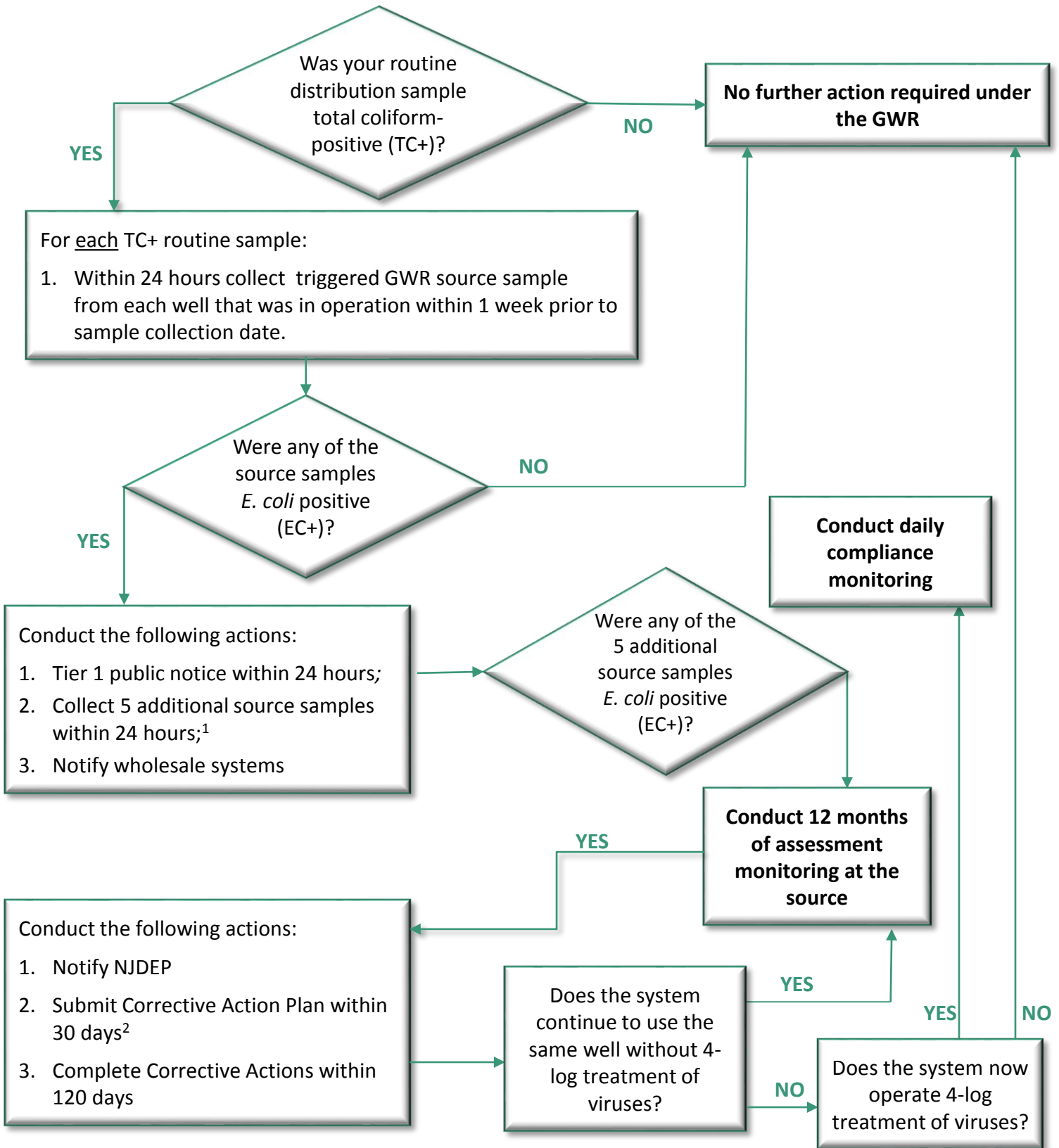


Ground Water Rule (GWR)

FLOWCHART FOR TRIGGERED SOURCE WATER MONITORING



NOTES

¹If 5 additional samples are not collected within 24 hours, the system must proceed to corrective actions.

²Corrective action options include: eliminate source of contamination, provide alternate source of water, and/or installation of 4-log treatment of viruses.