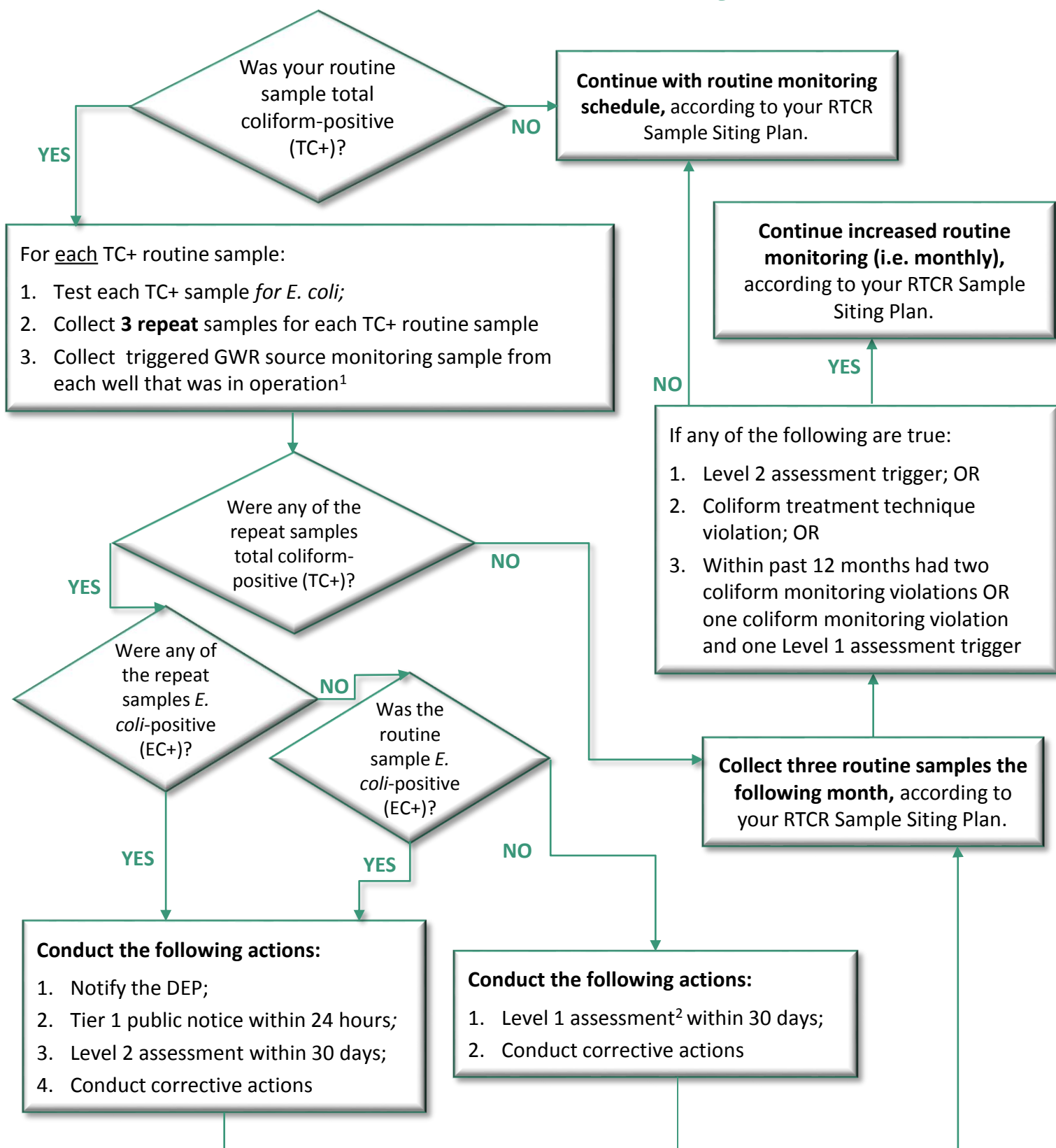


# Revised Total Coliform Rule (RTCR)

## FLOW CHART FOR PUBLIC WATER SYSTEMS ON QUARTERLY MONITORING



### NOTES

<sup>1</sup>Refer to GWR Flow Chart for sampling, public notice, and corrective action requirements

<sup>2</sup>Level 2 required if previously triggered Level 1 assessment within past 12 months