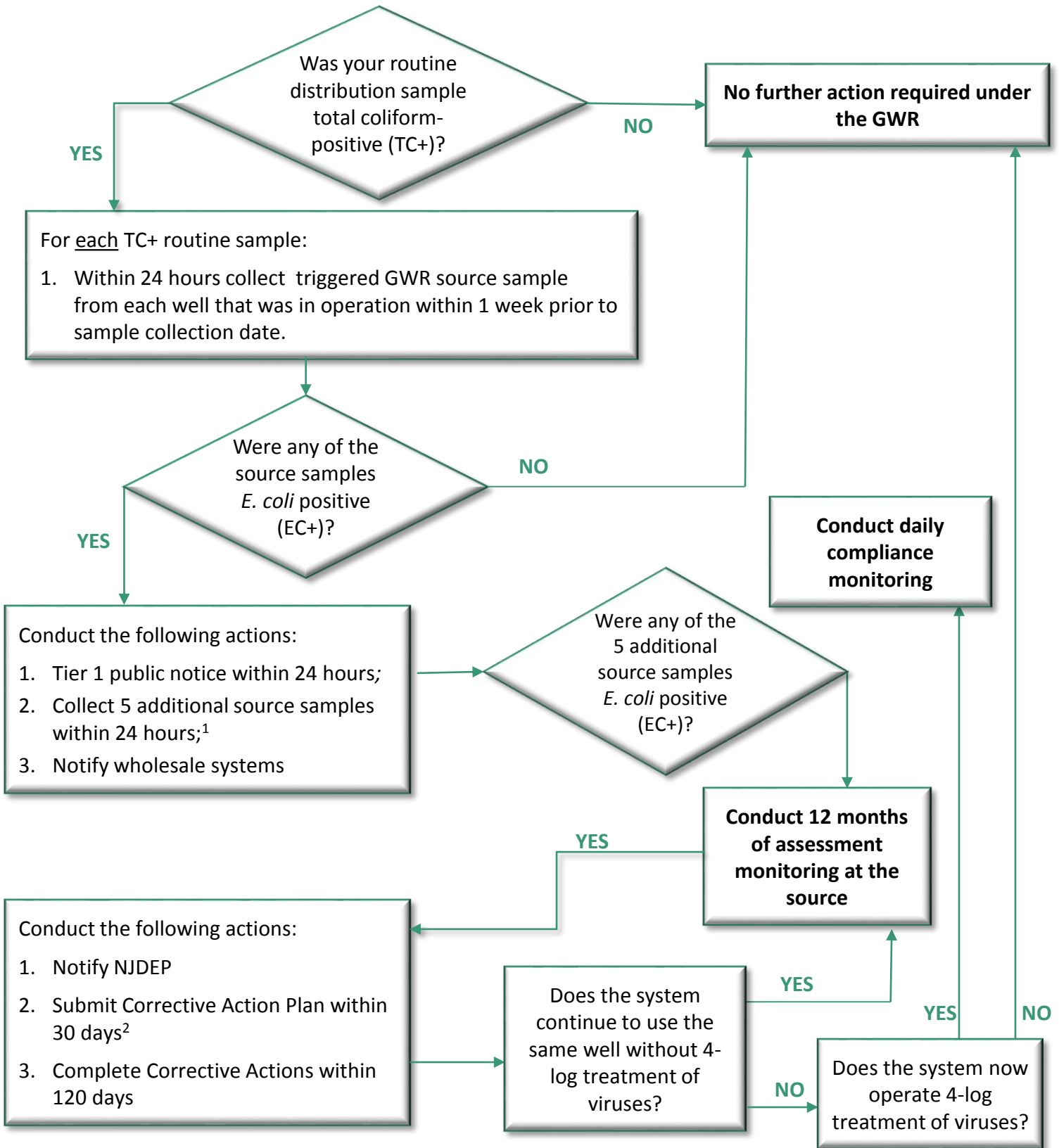


# Ground Water Rule (GWR)

## FLOWCHART FOR TRIGGERED SOURCE WATER MONITORING



### NOTES

<sup>1</sup>If 5 additional samples are not collected within 24 hours, the system must proceed to corrective actions.

<sup>2</sup>Corrective action options include: eliminate source of contamination, provide alternate source of water, and/or installation of 4-log treatment of viruses.